

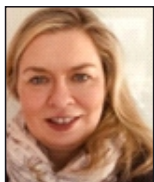
Family Carers & Older Persons Initiative

Our mission is to develop and deliver activities that support Family Carers and Older Persons using a community development approach. We aim to enhance existing links with local community groups and statutory services to better meet the needs of Family Carers and Older Persons and to overcome social isolation by supporting community connection and participation

What we offer Family Carers & Older Persons

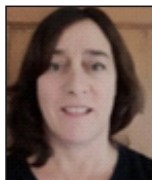
- To develop and deliver community initiatives that support Family Carers and Older Persons through peer support, community engagement and empowerment
- To listen, so we can identify local needs and then advocate for and develop local solutions in partnership with others
- To Promote health, well- being and positive aging and overcome social isolation through engagement in local group activities
- To signpost and refer Family Carers and Older Persons to services for information and supports
- To Advocate on behalf of Family Carers and Older Persons, where relevant

Carer and Older Persons Development workers:



Juliette O'Donoghue
Bantry
087 910 3036
juliette@locallinkcork.ie

Lorna Harte
Mizen & Sheep's Head Peninsula
087 400 1763
lorna@locallinkcork.ie



The Carers and Older Persons Initiative covers the Bantry area & Mizen & Sheep's Head Peninsulas. It is hosted by Local Link and is funded through Cork Kerry Community Healthcare, HSE.

Community Call

Community call offers a friendly call and listening service for older people and those living alone. Calls will come from our team of volunteers. The call service is strictly confidential.

If you are interested in this service or wish to find out more on behalf of a loved one or a neighbour, please phone Julie on: 027 52727

